

Whole-Body Thermometry Evaluates Your Physiological Health

- ✓ Breasts
- ✓ Ovaries
- ✓ Uterus
- ✓ Heart
- ✓ Thyroid
- ✓ Teeth
- ✓ Lymph
- ✓ Sinus
- ✓ Colon
- ✓ Kidney
- ✓ Prostate
- ✓ Liver
- ✓ Gallbladder
- ✓ Pancreas
- ✓ Stomach
- ✓ Small Intestine
- ✓ Spinal Column



**Judy Roberson, LMT
at Willow Health**

Call

*to find out how Whole-Body
Thermometry can reveal
information that will balance
and optimize your health.*

**Willow Health Food
And Wellness Center**

215-997-2838

Barb@willowhealthfood.com

Gentle Health Assessments



**Whole-Body
Health Screening
For Every Body!**



Chronic illness develops over time. Whole-Body Thermometry can discover disturbances that are important to address in order to restore and optimize your health.

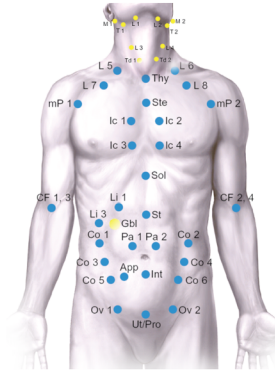
- ✓ For Early Detection
- ✓ To Identify Root Causes of Illness
- ✓ To Guide & Monitor Treatment

How Does It Work?

An infrared sensor measures skin temperature at over 100 points on the body before and after exposure to room temperature. Organs respond to this cooling stimulus on the skin surface via the Autonomic Nervous System. How well your nervous system is able to influence the skin temperature at each point reveals information about the health of the underlying organs.

Contributing factors to organ health are also captured during the test. This integrative approach helps your doctor determine the therapies best suited for you, as well as additional tests that may be necessary to confirm findings.

Imaging tests like MRI, Mammogram, and Ultrasound are anatomical tests. Whole-Body Thermometry is a functional test of organs and related systems.



What Is The Test Like?

The 20-minute test is gentle and non-invasive. You stand fully clothed as the first set of measurements is taken. Then you gradually disrobe to your underwear to expose your skin for a ten-minute cooling period before the points are measured a second time. The test data is then computed by the system and the results are returned instantly for consultation between you and your doctor.

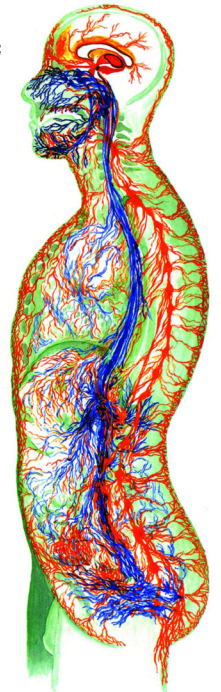


Founded on 30 years of research by European doctors specializing in Integrative Medicine

“This technology is the most comprehensive evaluation of the functioning of the internal organs of the human body.”

Dr. Michael Einsohn, D.C.
Dallas Thermography Clinic

A functional test that tracks your Autonomic Nervous System and blood flow responses



- ✓ Gentle & Painless
- ✓ Non-Invasive Technology
- ✓ Detailed Patient Report